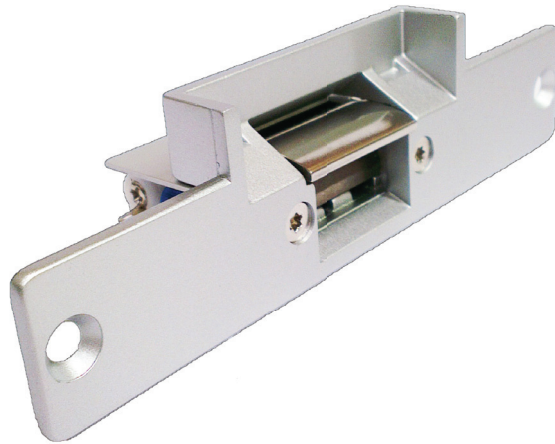


Door Strike Plate

Electric strike plate for use with our Home Automation Service to automatically lock and unlock doors.



Description

Ideal for use with INS LifeGuard's SmartHome units, the Electric Door Strike allows you to lock or unlock your door with the touch of a button. It works in conjunction with our Home Automation Service and Remote Power Switch, and it's fail secure, meaning it stays locked without power. Featuring a stainless steel faceplate and heavy duty latch, the Electric Door Strike can be mounted in most wood or aluminium frames.

Features

- The door can be automatically locked or unlocked from the SmartHome IPD tablet by the user, or by INS LifeGuard nurses (e.g. to allow emergency services to enter if required)
- This is a fail secure strike - when installed, the door is normally in locked state without power on, and the door lock is released when power is applied. It's suitable for an entrance door that is required to close in power failure.
- Stainless steel face and mounting plate
- Plate has rounded corners for easy installation
- Can use to 'buzz' people in without getting up

Specifications

- Operating Voltage: 12V DC (AC Operation Workable)
- Operating Current: 450 MA (on striking, DC operation)
- Fail-Secure (Normally De-energized)
- Dimensions: 150(L) x 39.5(W) x 28(H) mm
- Weight: 0.30kg

Works in conjunction with our Remote Power Switch, pictured below.

Specifications subject to change at discretion of INS LifeGuard.

Please see Installation Diagram on next page.



www.theinsgroup.com.au

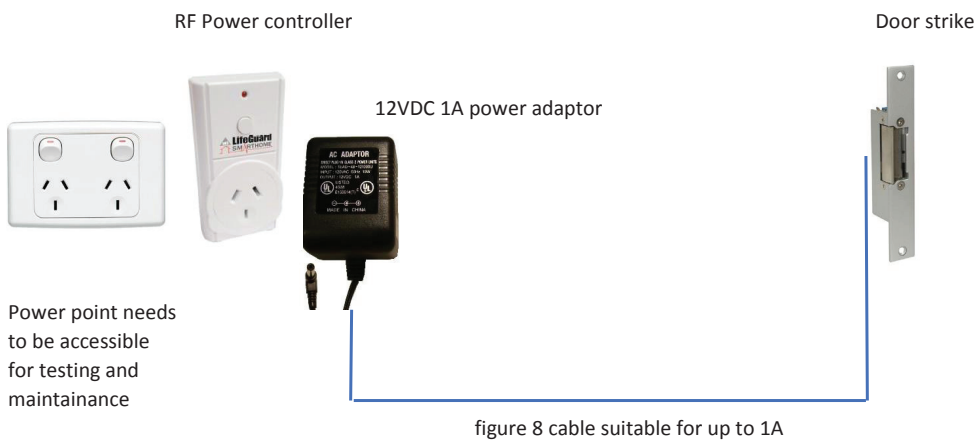
1 800 636 040

Installation Diagram

Fail-safe will leave door strike open during power fail
 Fail-secure will leave door strike locked during a power fail

Style	Lock type	length	width	height
Narrow	failsafe	160mm	25mm	28mm
Narrow	fail secure	160mm	25mm	28mm
Wide	failsafe	150mm	39.5mm	28mm
Wide	fail secure	150mm	39.5mm	28mm

Typical Installation Diagram



Voltage	12VDC	All models
Current	450mA	Fail-secure
	200mA	Fail-safe



INS Lifeguard - Door Strike